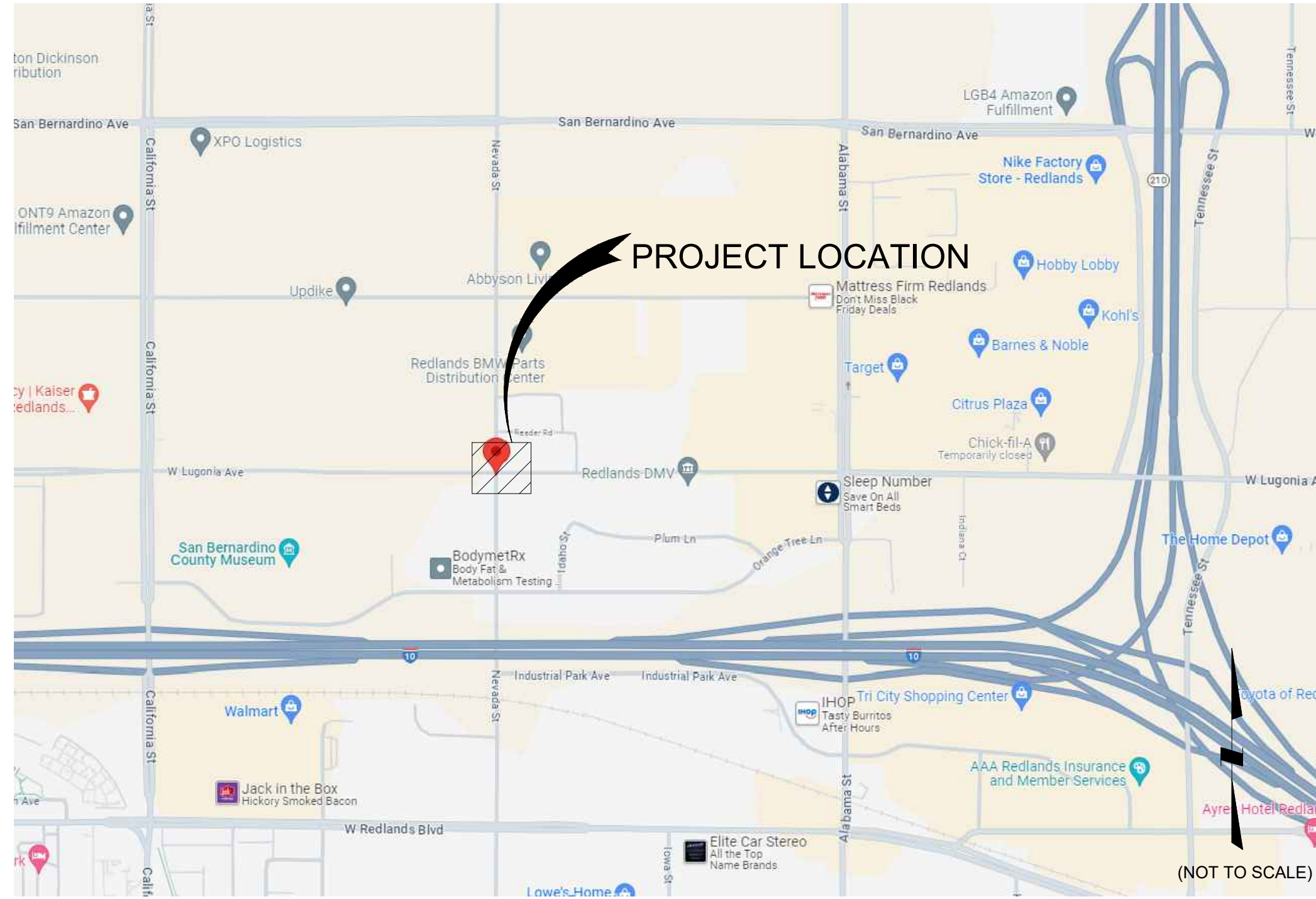


GENERAL NOTES

- THESE STANDARD NOTES AND PLANS SHALL NOT RELIEVE THE CONTRACTOR OF THE RESPONSIBILITY FOR JOBSITE CONDITIONS DURING THE COURSE OF CONSTRUCTION OR MAINTENANCE WORK, INCLUDING SAFETY OF ALL PERSONS, VEHICLES, AND PROPERTY.
- ALL WORK, MATERIALS, PRACTICES, AND PRINCIPLES SHALL COMPLY WITH THE CALIFORNIA MANUAL OF UNIFORM TRAFFIC CONTROL DEVICES (MUTCD) LATEST EDITION, AND THE WORK AREA TRAFFIC CONTROL HANDBOOK (WATCH) LATEST EDITION.
- THE CALIFORNIA MANUAL OF UNIFORM TRAFFIC CONTROL DEVICES (MUTCD) LATEST EDITION, AND THE WORK AREA TRAFFIC CONTROL HANDBOOK (WATCH) LATEST EDITION, SHALL TAKE PRECEDENCE IN THE EVENT OF ANY QUESTION REGARDING THE CONTROL OF THESE STANDARDS.
- NO DEVIATIONS OR EXCEPTIONS FROM THESE STANDARD NOTES OR PLANS SHALL BE ALLOWED WITHOUT PRIOR APPROVAL FROM THE PUBLIC WORKS DIRECTOR/COUNTY ENGINEER.
- CONES AND DELINEATORS SHALL GENERALLY BE PLACED ON EXISTING LANE LINES, EXCEPT AS NECESSARY FOR LANE CLOSURE TAPERS.
- THE CONTRACTOR SHALL BE RESPONSIBLE FOR NOTIFYING THE ADJACENT PROPERTY OWNERS.
- THE CONTRACTOR SHALL PROVIDE ACCESS TO ALL ADJACENT PROPERTIES AT ALL TIMES EXCEPT AS NECESSARY FOR CONSTRUCTION ACTIVITIES IN THE IMMEDIATE VICINITY OF THE WORK AREA.
- CONSTRUCTION OPERATIONS SHALL BE CONDUCTED IN A MANNER SUCH THAT AS LITTLE INCONVENIENCE AS POSSIBLE IS CAUSED TO THE PUBLIC AND ADJUTING PROPERTY OWNERS.
- THE CONTRACTOR SHALL HAVE ALL SIGNS, DELINEATORS, BARRICADES, ETC., PROPERLY INSTALLED PRIOR TO CONSTRUCTION.
- THE CONTRACTOR SHALL BE RESPONSIBLE FOR MAINTAINING, AT ALL TIMES, ALL SIGNS, DELINEATORS, BARRICADES, ETC., TO ENSURE PROPER FLOW AND SAFETY OF TRAFFIC.
- A MINIMUM LANE WIDTH OF 10' SHALL BE MAINTAINED AT ALL TIMES, NO EXCEPTIONS. WHEN ADJACENT TO CURB LANE, RAISED CURB MEDIANS, OTHER VERTICAL OBSTRUCTION, OR OPPOSING TRAFFIC, THE MINIMUM LANE WIDTH SHALL BE 12'.
- THE CONTRACTOR SHALL UTILIZE FLAG MEN DURING WORK HOURS AS REQUIRED BY THESE STANDARD PLANS AND AS DEEMED NECESSARY BY THE COUNTY TO ASSIST IN MAINTAINING SAFE TRAFFIC FLOW.
- FLASHING ARROW SIGNS (FAS) SHALL BE USED FOR ALL LANE CLOSURES AND SHALL BE SOLAR POWERED.
- THE FIRST SIGN IN A SERIES OF ADVANCED WARNING SIGNS SHALL BE EQUIPPED WITH FLAGS.
- FLASHING YELLOW BEACONS, TYPE B, SHALL BE USED ON ALL BARRICADES THAT PROTECT THE WORK AREA AFTER NORMAL WORKING HOURS.
- ALL SIGNS SHALL BE REFLECTORIZED AND OF STANDARD SIZES.
- THE CONTRACTOR SHALL BE REQUIRED TO REPLACE STRIPING AND LEGENDS TO THEIR ORIGINAL CONDITION AND EQUIPMENT AFTER COMPLETION OF CONSTRUCTION.
- ALL DELINEATORS SHALL BE 36" MINIMUM PORTABLE, REFLECTORIZED RUBBER GUIDE POST TUBES, ORANGE IN COLOR, WITH WEIGHTED BASES OR SANDBAG RINGS AND SHALL BE KEPT IN THEIR PROPER POSITION AT ALL TIMES, AND SHALL BE REPAIRED, REPLACED, OR CLEANED AS NECESSARY TO PRESERVE THEIR APPEARANCE AND CONTINUITY.
- ALL CONES, SHALL BE 28" MINIMUM, ORANGE IN COLOR, AND SHALL BE KEPT IN THEIR PROPER POSITION AT ALL TIMES, AND SHALL BE REPAIRED, REPLACED, OR CLEANED AS NECESSARY TO PRESERVE THEIR APPEARANCE AND CONTINUITY. ALL CONES SHALL BE FITTED WITH 13" MINIMUM REFLECTIVE SLEEVES FOR NIGHTTIME TRAFFIC CONTROL. MAXIMUM SPACING BETWEEN DELINEATORS SHALL BE 25'.
- AT LEAST EVERY THIRD CONE AND/OR DELINEATOR SHALL HAVE DELINEATOR OR CONE-MOUNTED DIRECTIONAL ARROWS PER THE WORK AREA TRAFFIC CONTROL HANDBOOK (WATCH) LATEST EDITION.
- BARRICADES SHALL BE USED, IN LIEU OF OR IN ADDITION TO RUBBER GUIDE POSTS, AS REQUIRED BY THESE STANDARD PLANS AND AT THE DIRECTION OF THE COUNTY, WHEN THEY ARE INTENDED TO PROVIDE ADDITIONAL EMPHASIS IN AREAS WHERE WORKERS ARE PRESENT.
- C27 (CA) "OPEN TRENCH" SIGNS SHALL BE USED IN CONJUNCTION WITH TYPE II BARRICADES DURING CONSTRUCTION AND NIGHTTIME CLOSURES AS APPLICABLE.
- WHERE LIGHTS ARE USED TO DELINEATE THE TRAVELED WAY THROUGH AND AROUND THE WORK AREA, THEY SHALL BE TYPE C (STEADY BURN LAMPS).
- WHEN A STREET CLOSURE IS APPROVED, THE CONTRACTOR SHALL NOTIFY THE POLICE DEPARTMENT, THE FIRE DEPARTMENT, THE LOCAL TRANSIT DISTRICT, AFFECTED RESIDENTS AND BUSINESSES AT LEAST ONE WEEK IN ADVANCE OF THE CLOSURE.
- ALL RESIDENTIAL STREET ACCESS RESTRICTED BY CONSTRUCTION OR MAINTENANCE ACTIVITIES SHALL BE RESTORED AT THE END OF EACH WORKING DAY UNLESS OTHERWISE APPROVED BY THE PUBLIC WORKS DIRECTOR/COUNTY ENGINEER.
- TEMPORARY "NO STOPPING" SIGNS SHALL BE POSTED 100' APART, AS NECESSARY DURING CONSTRUCTION OPERATIONS. WHEN A TEMPORARY "NO STOPPING" ZONE ON A STREET IS APPROVED BY THE COUNTY'S REPRESENTATIVE, THE CONTRACTOR SHALL NOTIFY THE POLICE DEPARTMENT AND POST "TOW AWAY, TEMPORARY NO STOPPING" AT LEAST TWO (2) WORKING DAYS IN ADVANCE. THE DURATION OF THE TEMPORARY PARKING RESTRICTION SHALL BE INDICATED ON THE SIGNS.
- WHEN SIGNAL TIMING AND/OR SIGNAL MODIFICATIONS ARE NECESSARY BEFORE OR DURING THE CONSTRUCTION, AND IF APPROVED BY THE TRAFFIC ENGINEER, THE CONTRACTOR SHALL NOTIFY THE COUNTY TRAFFIC DEPARTMENT AT LEAST THREE (3) WORKING DAYS IN ADVANCE OF THE WORK TO BE DONE IN ORDER TO COORDINATE THE CHANGES. THE CONTRACTOR SHALL PROVIDE THE PERSONNEL AND EQUIPMENT TO MAKE THE SIGNAL MODIFICATIONS; THE COUNTY SHALL MAKE THE NECESSARY SIGNAL TIMING CHANGES.
- CONTRACTOR SHALL REPLACE ALL TRAFFIC DETECTION DEVICES, SIGNING, STRIPING, MARKINGS, AND LEGENDS DAMAGED DURING CONSTRUCTION TO THE SATISFACTION OF THE COUNTY'S REPRESENTATIVE.
- THESE PLANS INDICATE TRAFFIC CONTROL IN THE WORK AREA DURING CONSTRUCTION ACTIVITIES. ADDITIONAL TRAFFIC CONTROLS, TRAFFIC SIGNS, AND/OR BARRICADES MAY BE NECESSARY OR REQUIRED IN THE FIELD. THE CONTRACTOR SHALL BE RESPONSIBLE FOR THE PLACEMENT OF ANY ADDITIONAL DEVICES NECESSARY AS DIRECTED BY THE COUNTY'S REPRESENTATIVE TO ASSURE SAFETY TO THE PUBLIC AT ALL TIMES DURING CONSTRUCTION.
- CONTRACTOR SHALL COMPLY WITH THE REQUIREMENTS OF THE AMERICAN DISABILITY ACT (ADA) AS RELATED TO PEDESTRIAN ACCESS AND SHALL MAINTAIN PEDESTRIAN ACCESS AT ALL TIMES PER ADA REQUIREMENTS.
- INSTALL TEMPORARY NO PARKING SIGNS (IF REQUIRED) 72 HOURS PRIOR TO THE CLOSURE.



**SAN BERNARDINO COUNTY
TEMPORARY TRAFFIC CONTROL - GENERAL NOTES**

- ALL STRIPING (LONG LINE) AND PAVEMENT MARKINGS SHALL BE RETROREFLECTIVE PAINT.
- ALL CONSTRUCTION SIGNS SHALL BE OF DIAMOND GRADE (FHWA TYPE IX) FLUORESCENT ORANGE RETROREFLECTIVE SHEETING.
- ALL REGULATORY, GUIDE, AND WARNING SIGNS SHALL BE OF HIGH INTENSITY (FHWA TYPE III/IV) RETROREFLECTIVE SHEETING EXCEPT:
 - STOP SIGNS SHALL BE DIAMOND GRADE (FHWA TYPE VII IN RURAL SETTINGS AND TYPE IX IN URBAN SETTINGS) RETROREFLECTIVE SHEETING.
 - "NO PARKING" SIGNS SHALL BE OF SUPER ENGINEERING GRADE (FHWA TYPE II) RETROREFLECTIVE SHEETING.
 - SCHOOL SIGNS SHALL BE OF DIAMOND GRADE (FHWA TYPE IX) FLUORESCENT YELLOW-GREEN (FYG) RETROREFLECTIVE SHEETING.
 - STREET NAME MARKERS SHALL BE OF DIAMOND GRADE (FHWA TYPE IX) RETROREFLECTIVE SHEETING AND CONFORM TO COUNTY STANDARD 303.
- ALL DELINEATORS, CHANNELIZERS, AND OBJECT MARKERS SHALL BE OF FHWA TYPE VII RETROREFLECTIVE SHEETING.
- SIGNS SHOULD BE MOUNTED ON METAL POSTS SIMILAR TO COUNTY STANDARD 303(A) AND 303(B). SIGNS MOUNTED ON PORTABLE BARRICADES SHALL BE AUTHORIZED AS DIRECTED BY COUNTY REPRESENTATIVE.
- ALL CONFLICTING STRIPING AND PAVEMENT MARKINGS SHALL BE REMOVED BY THE CONTRACTOR. REMOVAL OF EXISTING TRAFFIC STRIPES AND PAVEMENT MARKINGS SHALL BE BY MECHANICAL MEANS IN CONFORMANCE WITH SCAQMD RULE 1140. PAINTING OVER OR "BLACKING OUT" SHALL NOT BE ACCEPTED. THE CONTRACTOR SHALL OBTAIN APPROVAL FROM THE ENGINEER ON THE FINAL METHOD OF REMOVAL PRIOR TO PERFORMING THE WORK.
- ALL CONFLICTING SIGNS SHALL BE REMOVED, RELOCATED, OR COVERED BY THE CONTRACTOR. RELOCATABLE SIGNS SHALL BE INSTALLED AS SPECIFIED ON THE PLANS OR AS DIRECTED BY COUNTY REPRESENTATIVE.
- ALL UNPROTECTED LOCATIONS RESULTING IN ISOLATED ABRUPT DEPRESSIONS OR ELEVATED OBJECTS (I.E. CATCH BASINS, HEADWALLS, POWER POLES, END TREATMENT OF ASPHALT DIKES AND CONCRETE CURBS) SHALL BE PROTECTED BY DELINEATORS OR BARRIERS PER THE CALIFORNIA MUTCD LATEST EDITION.
- ALL EXISTING SIGNING, STRIPING AND PAVEMENT MARKINGS (I.E. CROSS STREET STOP, STOP LIMIT LINE AND CROSSWALK PAVEMENT MARKINGS) NOT SHOWN ON PLANS, IF REMOVED/OBLITERATED, SHALL BE REPLACED/RESTORED OF SAME KIND, AND IN CONFORMANCE WITH THE CALIFORNIA MUTCD LATEST EDITION.
- ALL ROAD CLOSURE BARRICADES SHALL COMPLY WITH COUNTY STANDARDS 305C, 305D, 305E, AND 305F.

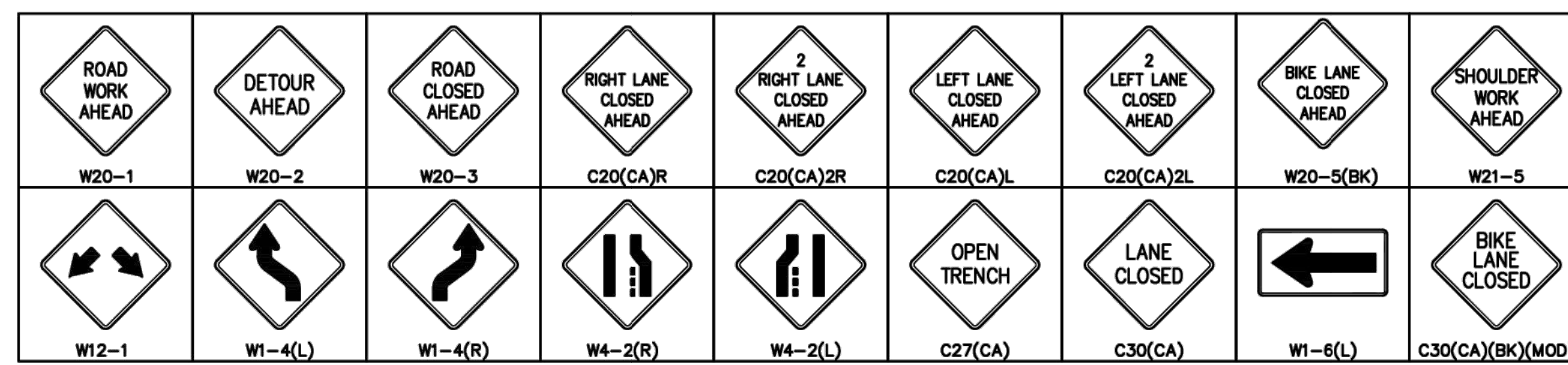
REV 04/22/2021

SPEED LIMIT	DIMENSION "A" * ADVANCE WARNING SIGN SPACING	DIMENSION "L1" * MERGING TAPER LENGTH	DIMENSION "L2" * SHIFTING TAPER LENGTH	DIMENSION "E" * BUFFER SPACE (0% SLOPE)	MAXIMUM CHANNELIZER TAPER SPACING	MAXIMUM CHANNELIZER TANGENT SPACING
25 MPH	100 FT	125 FT	63 FT	155 FT	25 FT	50 FT
30 MPH	250 FT	180 FT	90 FT	200 FT	30 FT	60 FT
35 MPH	250 FT	245 FT	125 FT	250 FT	35 FT	70 FT
40 MPH	250 FT	320 FT	160 FT	305 FT	40 FT	80 FT
45 MPH	350 FT	540 FT	270 FT	360 FT	45 FT	90 FT
50 MPH	350 FT	600 FT	300 FT	425 FT	50 FT	100 FT
55 MPH	500 FT	660 FT	330 FT	495 FT	50 FT	100 FT
60 MPH	500 FT	720 FT	360 FT	570 FT	50 FT	100 FT

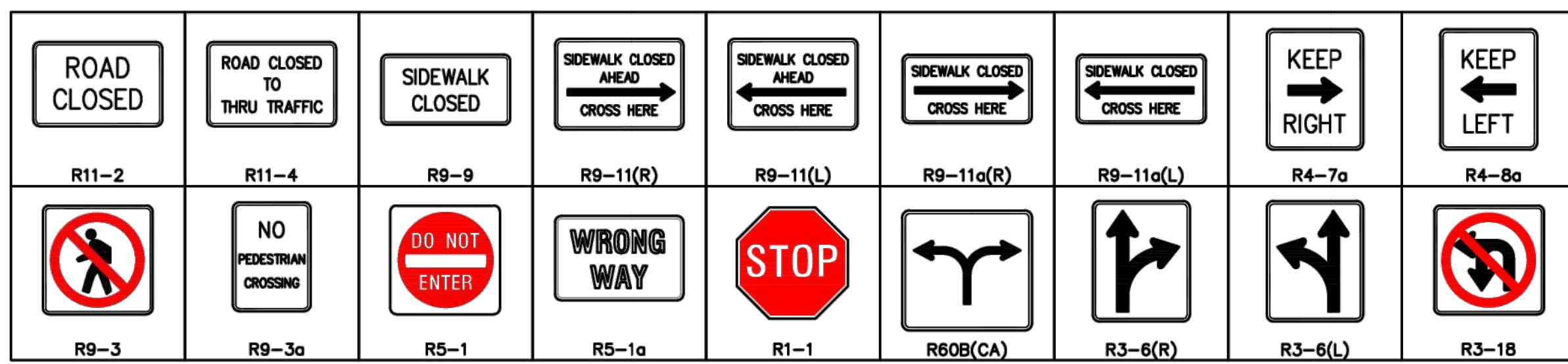
SHEET INDEX

SHEET NO.	PHASE	DESCRIPTION
1		TITLE SHEET
2	1	POT HOLE FOR CROSSINGS IN PHASE 3 & 4, TS OVERHEAD WORK
3	2	POT HOLE FOR CROSSINGS IN PHASE 3 & 4, TS OVERHEAD WORK
4	3	CONDUITS, PULLBOXES, FOUNDATIONS, POLES
5	4	CONDUITS, PULLBOXES, FOUNDATIONS, POLES
6	5	EDISON CONDUIT

WARNING SIGNS

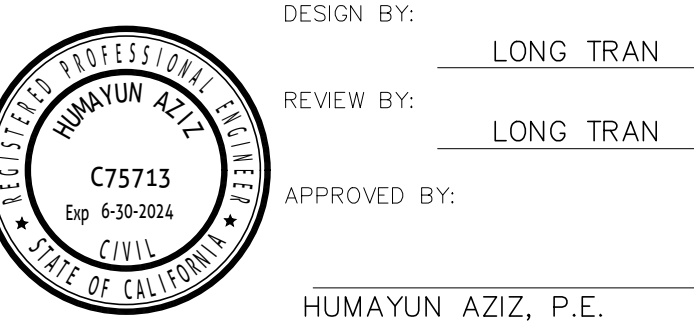


REGULATORY SIGNS



LEGEND:

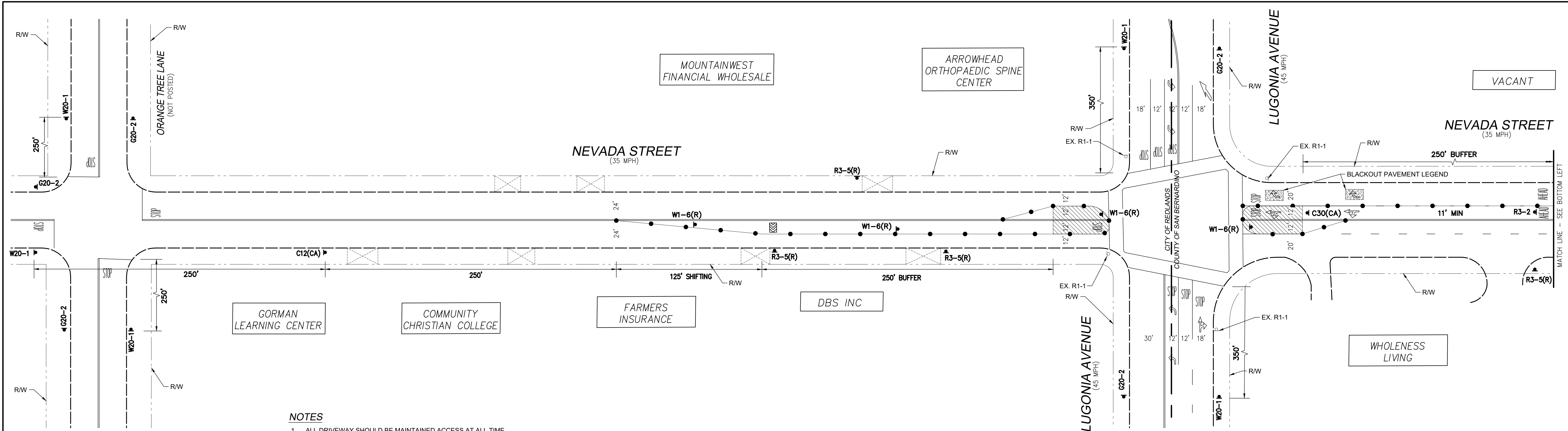
- PROPOSED WORK AREA
- EXISTING STRIPING
- EXISTING CURB & GUTTER
- MUNICIPALITY BOUNDARY LINES
- EXISTING DRIVEWAY(S)
- CALTRANS BOUNDARY LINES
- PROPOSED CHANNELIZATION LINE
- EXISTING FENCE LINE
- PROPOSED FLAG PERSON W/ 2-WAY RADIO
- PROPOSED PORTABLE ARROW BOARD
- PROPOSED PORTABLE MESSAGE SIGN
- PROPOSED SIGN W/ POST
- PROPOSED TYPE II BARRICADE W/ SIGN(S)
- PROPOSED TYPE III BARRICADE W/ SIGN(S)
-
-



DESIGN BY:	LONG TRAN		
REVIEW BY:	LONG TRAN		
APPROVED BY:	HUMAYUN AZIZ, P.E.		
MARK	REVISIONS	APPR.	DATE



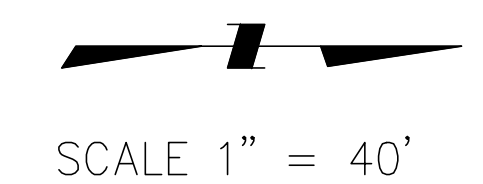
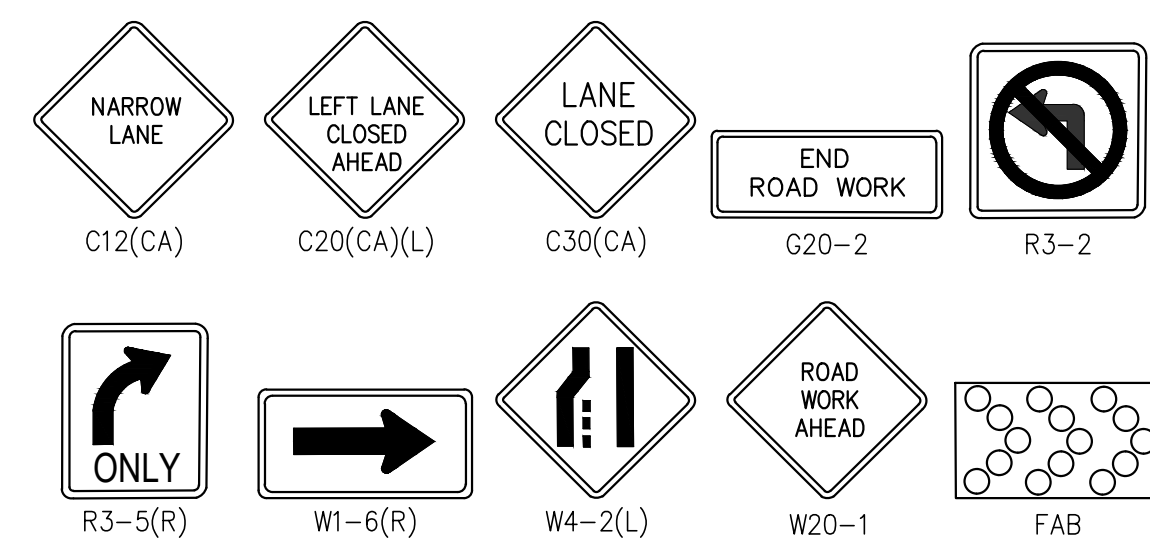
TRAFFIC CONTROL PLAN	
TRAFFIC SIGNAL INSTALLATION LUGONIA AVENUE AND NEVADA STREET	
TITLE SHEET	
HORIZ. SCALE: 1"= 40'	VERT. SCALE: N/A



NOTES

1. ALL DRIVEWAY SHOULD BE MAINTAINED ACCESS AT ALL TIME.
2. CONTRACTOR SHALL ENSURE ACCOMMODATIONS TO PLACEMENT OF TRAFFIC CONTROL DEVICES ARE MADE TO ENSURE CLEAR PATHS FOR TURNING VEHICLES INCLUDING TRUCKS IS MAINTAINED AT INTERSECTION.
3. EXISTING STOP SIGNS OR TEMPORARY STOP SIGNS SHALL BE PRESENT AT ALL TIMES TO MAINTAIN A STOP-CONTROL INTERSECTION UNTIL THE TRAFFIC SIGNAL TURN-ON AS DIRECTED BY THE COUNTY ENGINEER.

SIGN LEGENDS:

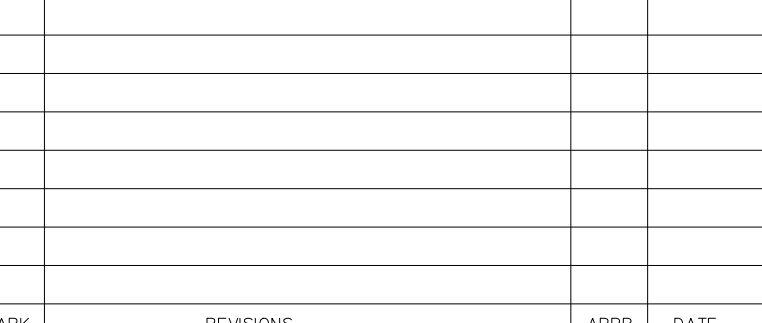


PHASE 1
DURATION: 5 WORKING DAYS



DESIGN BY: LONG TRAN
REVIEW BY: LONG TRAN
APPROVED BY: HUMAYUN AZIZ, P.E.

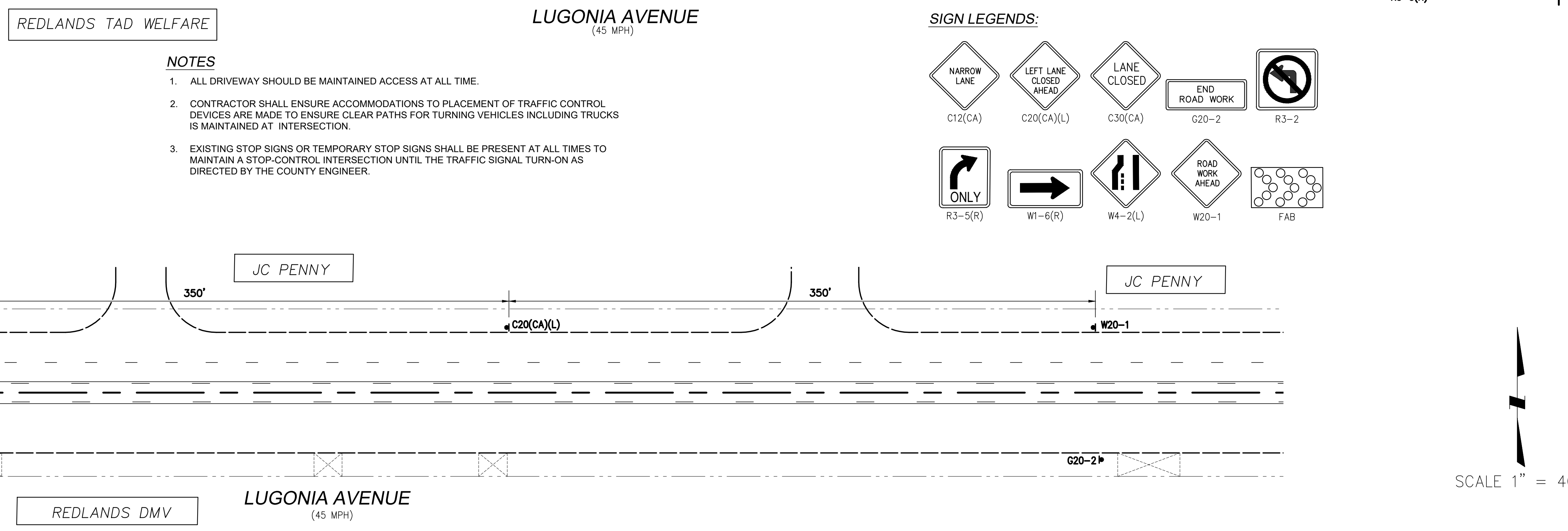
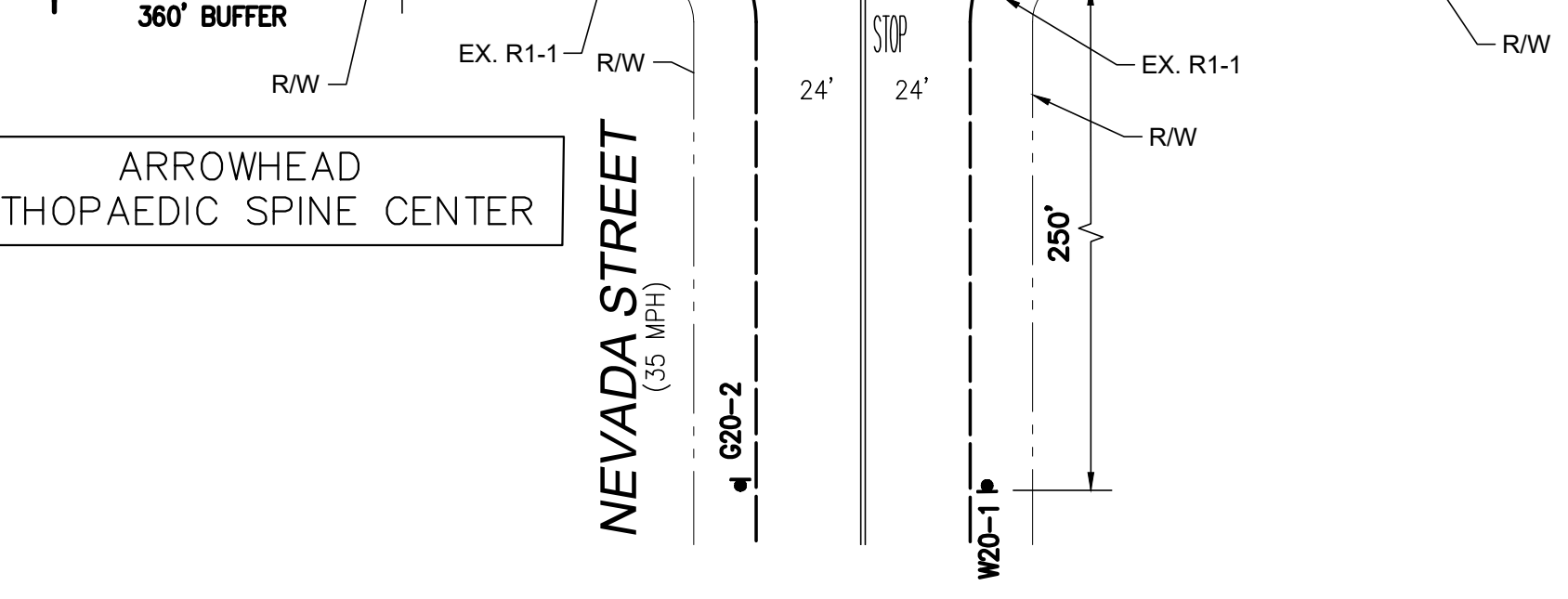
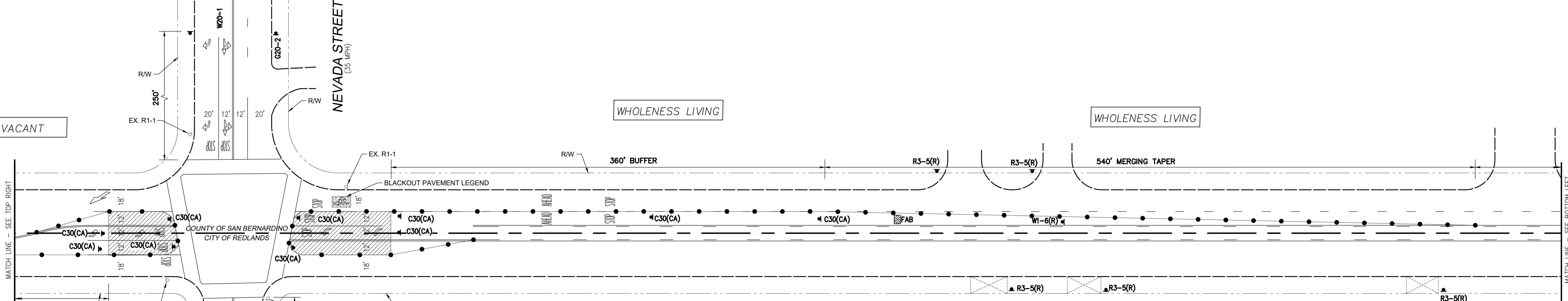
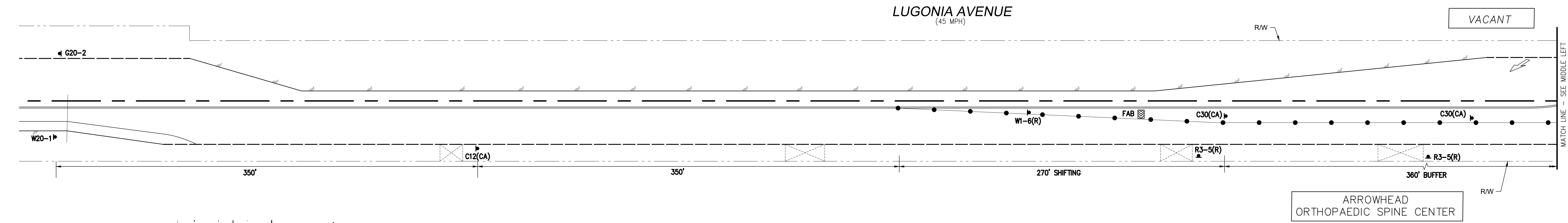
MARK	REVISIONS	APPR.	DATE



CITY OF REDLANDS
DEPARTMENT OF MUNICIPAL UTILITIES AND ENGINEERING
APPROVED BY: _____ ENGINEER
DATE: _____

TRAFFIC CONTROL PLAN
TRAFFIC SIGNAL INSTALLATION
LUGONIA AVENUE AND NEVADA STREET
POTHOLE FOR CROSSINGS IN PHASE 3 AND 4
TRAFFIC SIGNAL OVERHEAD WORK
HORIZ. SCALE: 1" = 40' VERT. SCALE: N/A

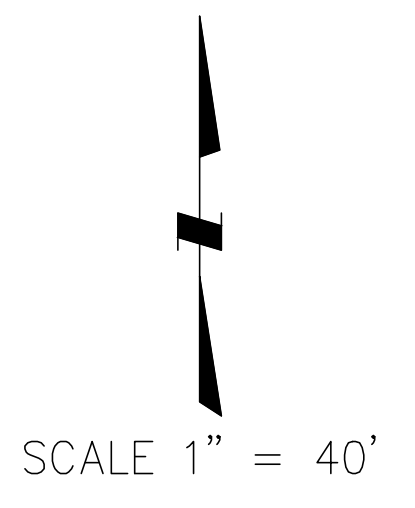
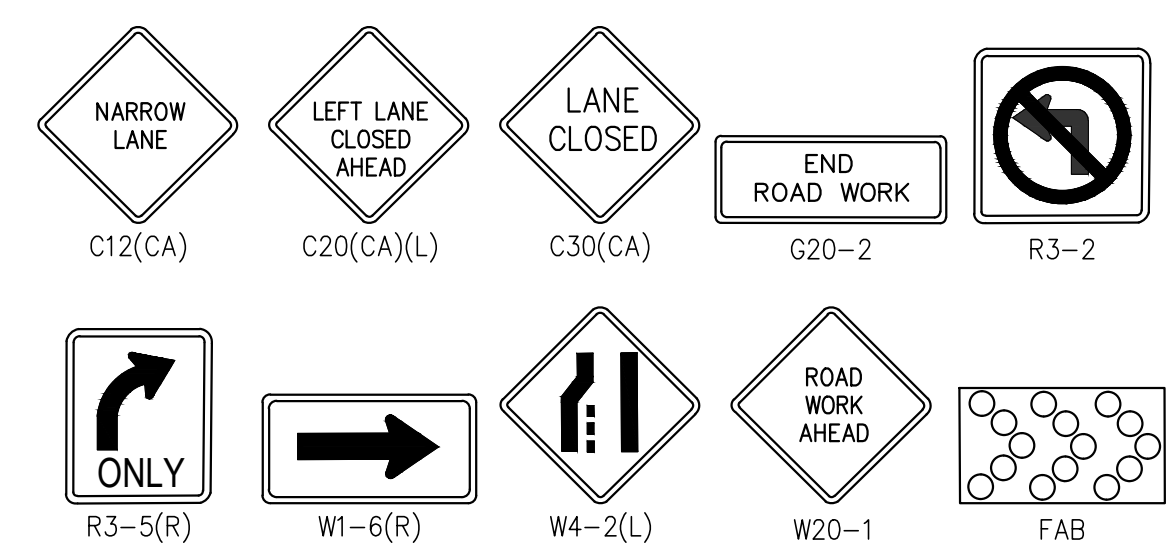
TC-2
SHEET 2 OF 6



NOTES

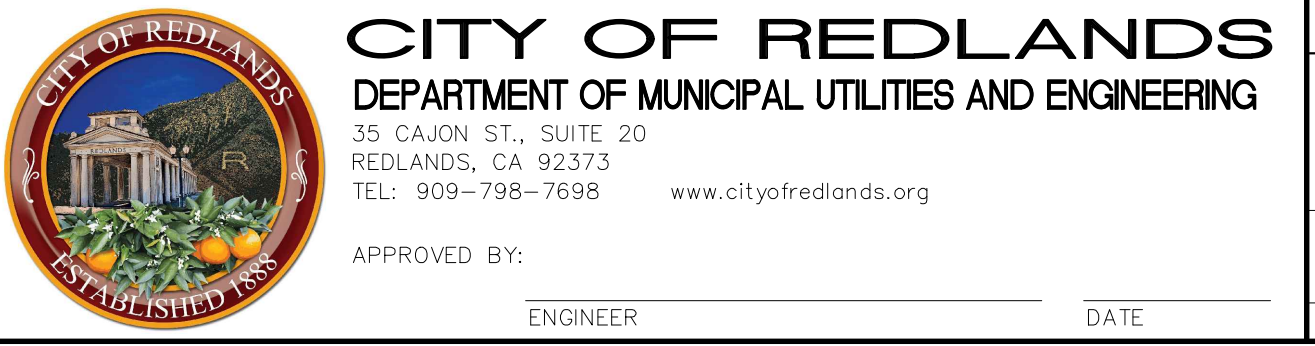
1. ALL DRIVEWAY SHOULD BE MAINTAINED ACCESS AT ALL TIME.
2. CONTRACTOR SHALL ENSURE ACCOMMODATIONS TO PLACEMENT OF TRAFFIC CONTROL DEVICES ARE MADE TO ENSURE CLEAR PATHS FOR TURNING VEHICLES INCLUDING TRUCKS IS MAINTAINED AT INTERSECTION.
3. EXISTING STOP SIGNS OR TEMPORARY STOP SIGNS SHALL BE PRESENT AT ALL TIMES TO MAINTAIN A STOP-CONTROL INTERSECTION UNTIL THE TRAFFIC SIGNAL TURN-ON AS DIRECTED BY THE COUNTY ENGINEER.

SIGN LEGENDS:



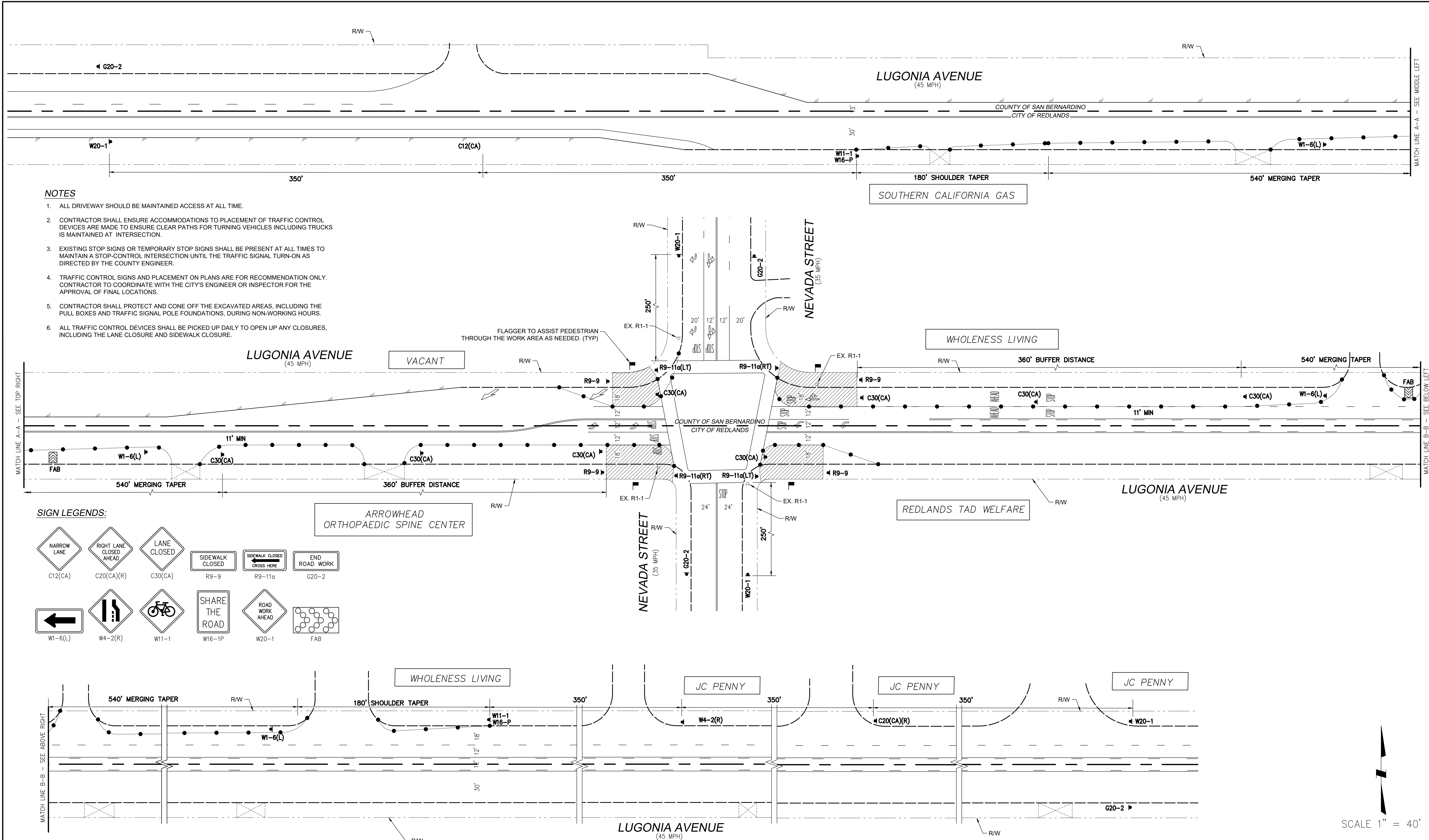
DESIGN BY: LONG TRAN
 REVIEW BY: LONG TRAN
 APPROVED BY: HUMAYUN AZIZ, P.E.

MARK	REVISIONS	APPR.	DATE

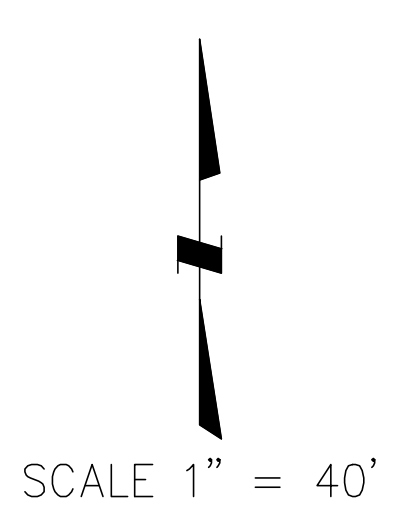
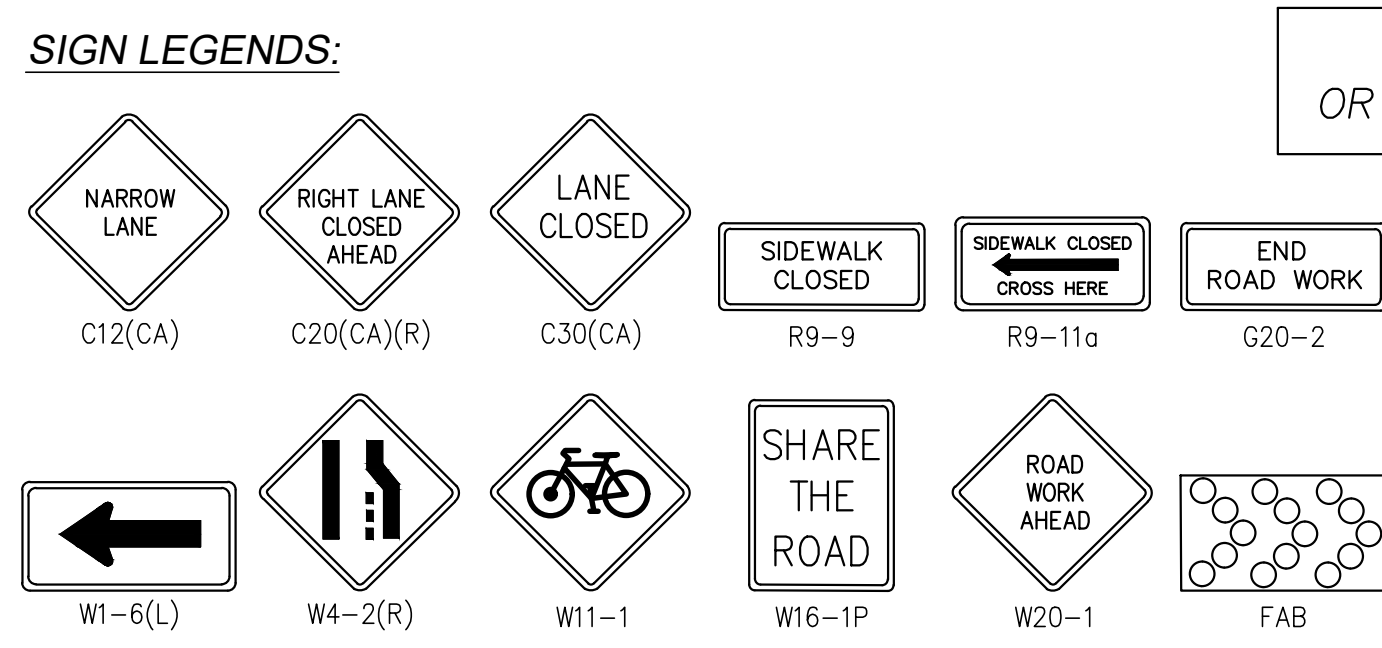


TRAFFIC CONTROL PLAN
TRAFFIC SIGNAL INSTALLATION
LUGONIA AVENUE AND NEVADA STREET
 POT HOLE FOR CROSSINGS IN PHASE 3 AND 4
 TRAFFIC SIGNAL OVERHEAD WORK
 HORIZ. SCALE: 1" = 40' VERT. SCALE: N/A

PHASE 2
 DURATION: 5 WORKING DAYS
TC-3
 SHEET 3 OF 6



- NOTES**
1. ALL DRIVEWAY SHOULD BE MAINTAINED ACCESS AT ALL TIME.
 2. CONTRACTOR SHALL ENSURE ACCOMMODATIONS TO PLACEMENT OF TRAFFIC CONTROL DEVICES ARE MADE TO ENSURE CLEAR PATHS FOR TURNING VEHICLES INCLUDING TRUCKS IS MAINTAINED AT INTERSECTION.
 3. EXISTING STOP SIGNS OR TEMPORARY STOP SIGNS SHALL BE PRESENT AT ALL TIMES TO MAINTAIN A STOP-CONTROL INTERSECTION UNTIL THE TRAFFIC SIGNAL TURN-ON AS DIRECTED BY THE COUNTY ENGINEER.
 4. TRAFFIC CONTROL SIGNS AND PLACEMENT ON PLANS ARE FOR RECOMMENDATION ONLY. CONTRACTOR TO COORDINATE WITH THE CITY'S ENGINEER OR INSPECTOR FOR THE APPROVAL OF FINAL LOCATIONS.
 5. CONTRACTOR SHALL PROTECT AND CONE OFF THE EXCAVATED AREAS, INCLUDING THE PULL BOXES AND TRAFFIC SIGNAL POLE FOUNDATIONS, DURING NON-WORKING HOURS.
 6. ALL TRAFFIC CONTROL DEVICES SHALL BE PICKED UP DAILY TO OPEN UP ANY CLOSURES, INCLUDING THE LANE CLOSURE AND SIDEWALK CLOSURE.

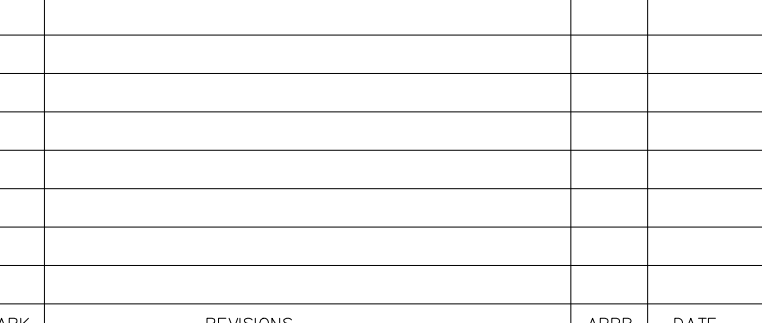


PHASE 3
DURATION: 15 WORKING DAYS



DESIGN BY: LONG TRAN
 REVIEW BY: LONG TRAN
 APPROVED BY: HUMAYUN AZIZ, P.E.

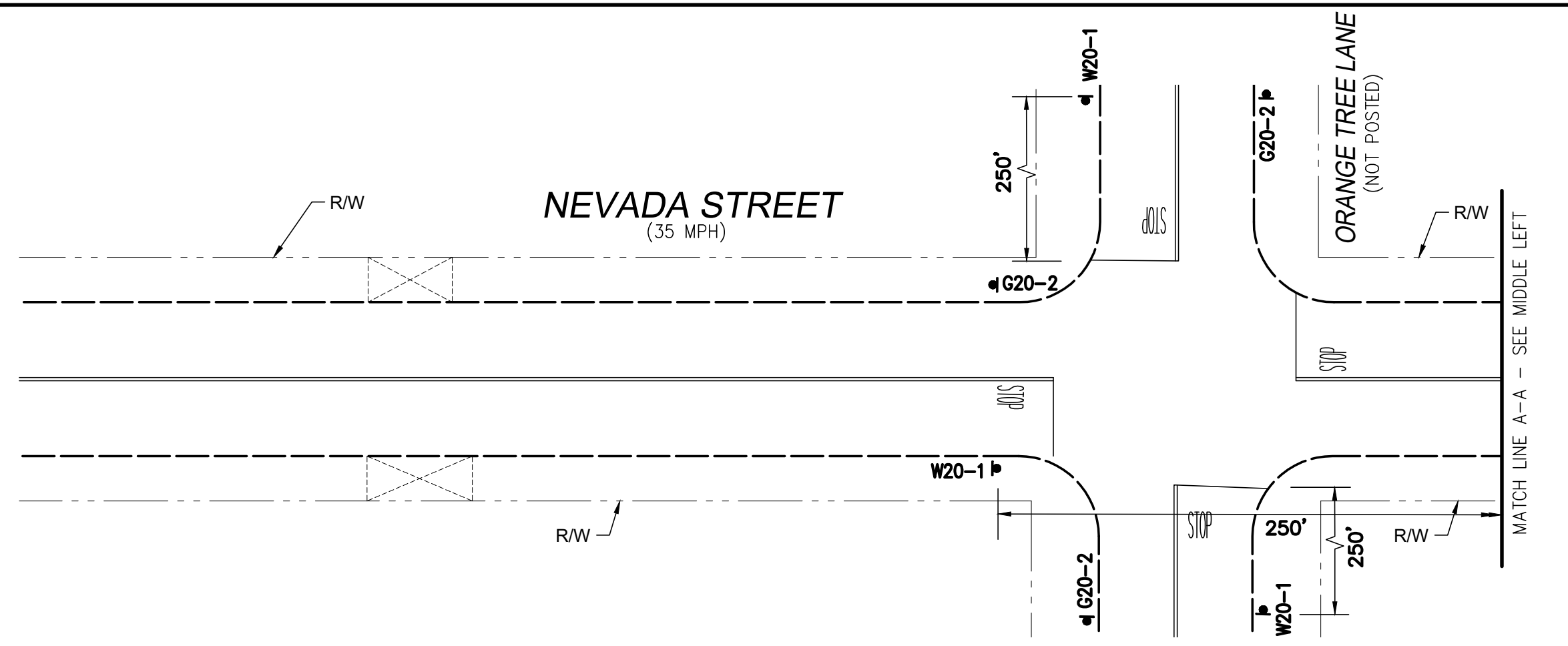
MARK	REVISIONS	APPR.	DATE



CITY OF REDLANDS
 DEPARTMENT OF MUNICIPAL UTILITIES AND ENGINEERING
 35 CAJON ST., SUITE 20
 REDLANDS, CA 92373
 TEL: 909-798-7698 www.cityofredlands.org
 APPROVED BY: _____ ENGINEER DATE _____

TRAFFIC CONTROL PLAN
TRAFFIC SIGNAL INSTALLATION
LUGONIA AVENUE AND NEVADA STREET
 CONDUITS, PULLBOXES, FOUNDATIONS, POLES
 HORIZ. SCALE: 1" = 40' VERT. SCALE: N/A

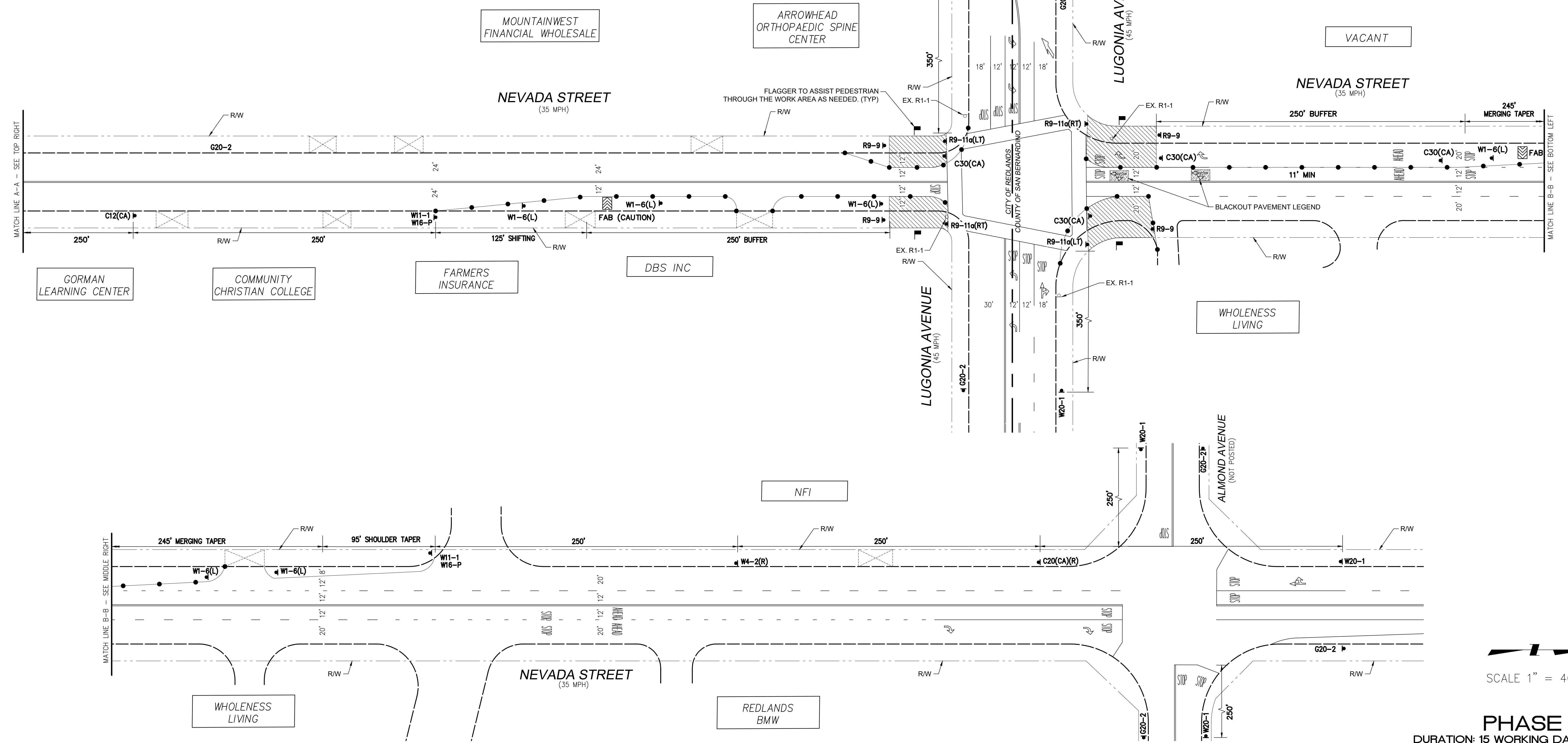
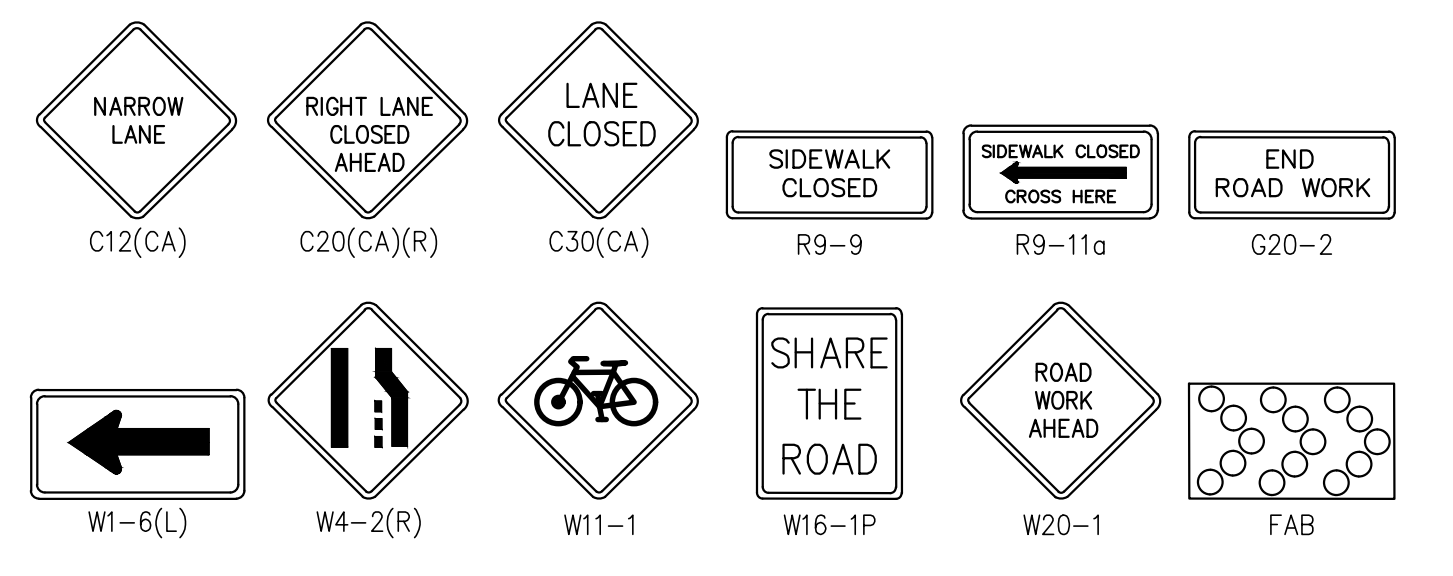
TC-4
 SHEET 4 OF 6



NOTES

1. ALL DRIVEWAY SHOULD BE MAINTAINED ACCESS AT ALL TIME.
2. CONTRACTOR SHALL ENSURE ACCOMMODATIONS TO PLACEMENT OF TRAFFIC CONTROL DEVICES ARE MADE TO ENSURE CLEAR PATHS FOR TURNING VEHICLES INCLUDING TRUCKS IS MAINTAINED AT INTERSECTION.
3. EXISTING STOP SIGNS OR TEMPORARY STOP SIGNS SHALL BE PRESENT AT ALL TIMES TO MAINTAIN A STOP-CONTROL INTERSECTION UNTIL THE TRAFFIC SIGNAL TURN-ON AS DIRECTED BY THE COUNTY ENGINEER.
4. TRAFFIC CONTROL SIGNS AND PLACEMENT ON PLANS ARE FOR RECOMMENDATION ONLY. CONTRACTOR TO COORDINATE WITH THE CITY'S ENGINEER OR INSPECTOR FOR THE APPROVAL OF FINAL LOCATIONS.
5. CONTRACTOR SHALL PROTECT AND CONE OFF THE EXCAVATED AREAS, INCLUDING THE PULL BOXES AND TRAFFIC SIGNAL POLE FOUNDATIONS, DURING NON-WORKING HOURS.
6. ALL TRAFFIC CONTROL DEVICES SHALL BE PICKED UP DAILY TO OPEN UP ANY CLOSURES, INCLUDING THE LANE CLOSURE AND SIDEWALK CLOSURE.

SIGN LEGENDS:



SCALE 1" = 40'

PHASE 4
DURATION: 15 WORKING DAYS



TRAFFIC CONTROL PLANS PREPARED BY

1192 Athlone Lane Corona, CA 92882
CELL: 949-254-4792

DESIGN BY: LONG TRAN
REVIEW BY: LONG TRAN
APPROVED BY: HUMAYUN AZIZ, P.E.

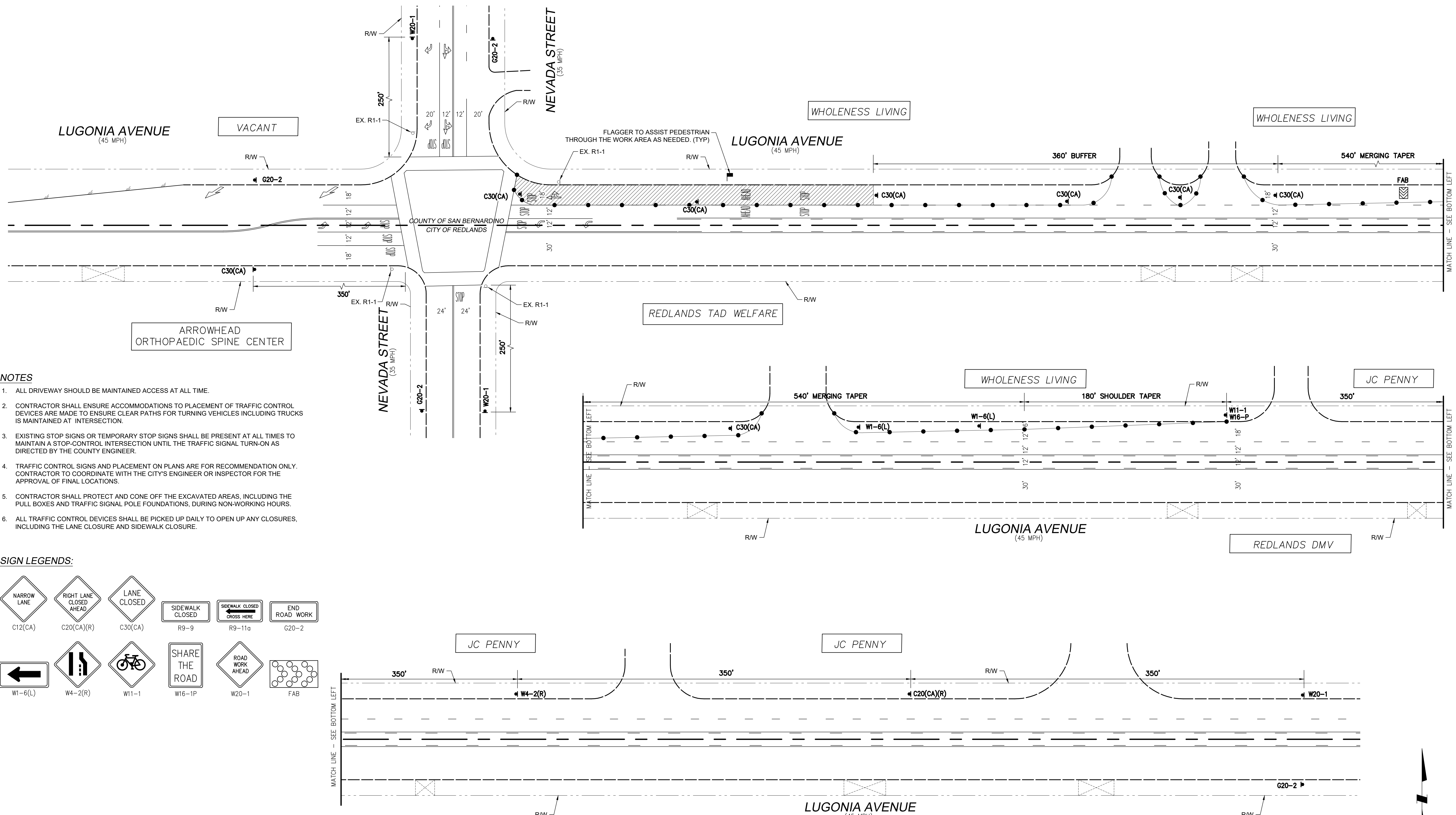
MARK	REVISIONS	APPR.	DATE

CITY OF REDLANDS
DEPARTMENT OF MUNICIPAL UTILITIES AND ENGINEERING
35 CAJON ST., SUITE 20
REDLANDS, CA 92373
TEL: 909-798-7698 www.cityofredlands.org

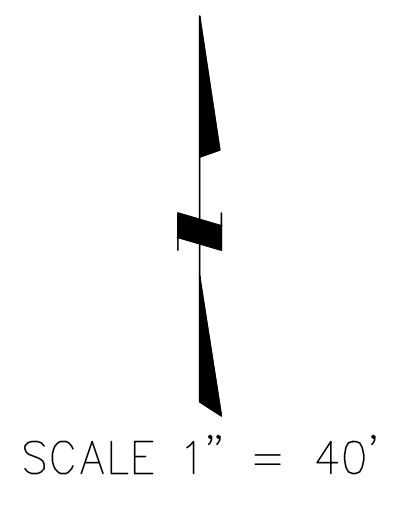
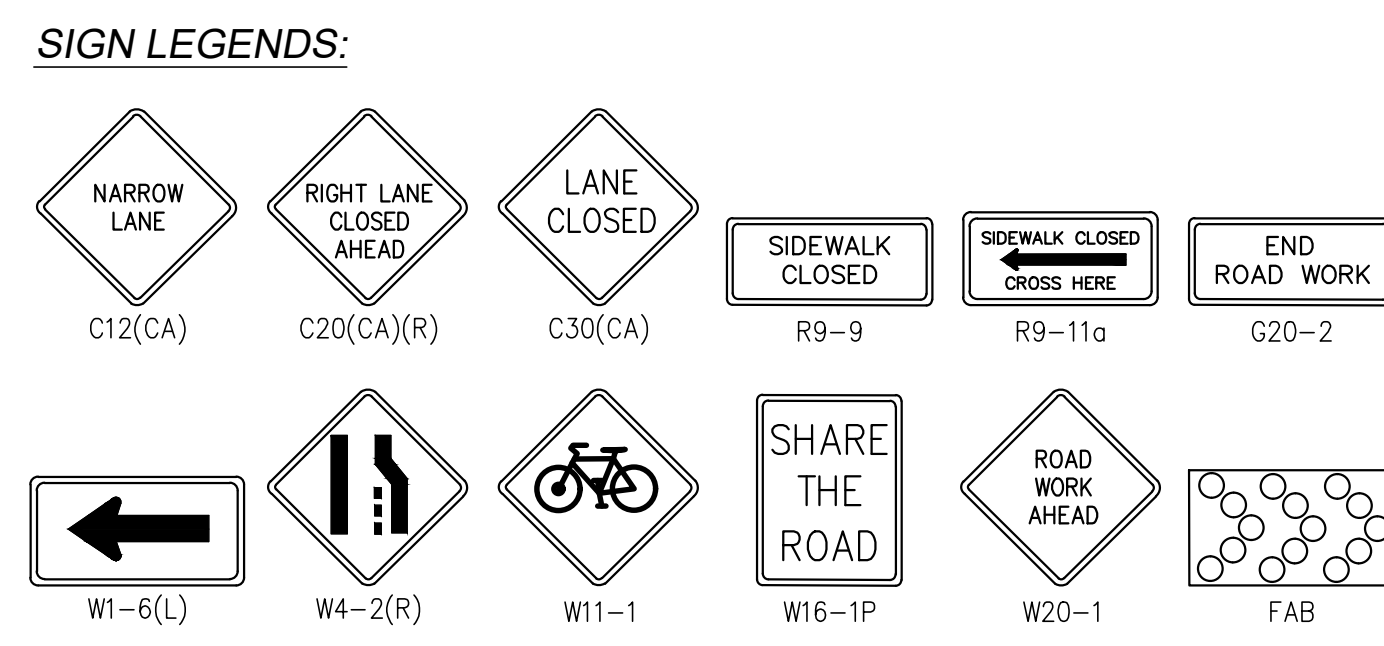
APPROVED BY: _____ ENGINEER
DATE: _____

TRAFFIC CONTROL PLAN
TRAFFIC SIGNAL INSTALLATION
LUGONIA AVENUE AND NEVADA STREET
CONDUITS, PULLBOXES, FOUNDATIONS, POLES
HORIZ. SCALE: 1" = 40' VERT. SCALE: N/A

TC-5
SHEET 5 OF 6



- NOTES**
1. ALL DRIVEWAY SHOULD BE MAINTAINED ACCESS AT ALL TIME.
 2. CONTRACTOR SHALL ENSURE ACCOMMODATIONS TO PLACEMENT OF TRAFFIC CONTROL DEVICES ARE MADE TO ENSURE CLEAR PATHS FOR TURNING VEHICLES INCLUDING TRUCKS IS MAINTAINED AT INTERSECTION.
 3. EXISTING STOP SIGNS OR TEMPORARY STOP SIGNS SHALL BE PRESENT AT ALL TIMES TO MAINTAIN A STOP-CONTROL INTERSECTION UNTIL THE TRAFFIC SIGNAL TURN-ON AS DIRECTED BY THE COUNTY ENGINEER.
 4. TRAFFIC CONTROL SIGNS AND PLACEMENT ON PLANS ARE FOR RECOMMENDATION ONLY. CONTRACTOR TO COORDINATE WITH THE CITY'S ENGINEER OR INSPECTOR FOR THE APPROVAL OF FINAL LOCATIONS.
 5. CONTRACTOR SHALL PROTECT AND CONE OFF THE EXCAVATED AREAS, INCLUDING THE PULL BOXES AND TRAFFIC SIGNAL POLE FOUNDATIONS, DURING NON-WORKING HOURS.
 6. ALL TRAFFIC CONTROL DEVICES SHALL BE PICKED UP DAILY TO OPEN UP ANY CLOSURES, INCLUDING THE LANE CLOSURE AND SIDEWALK CLOSURE.

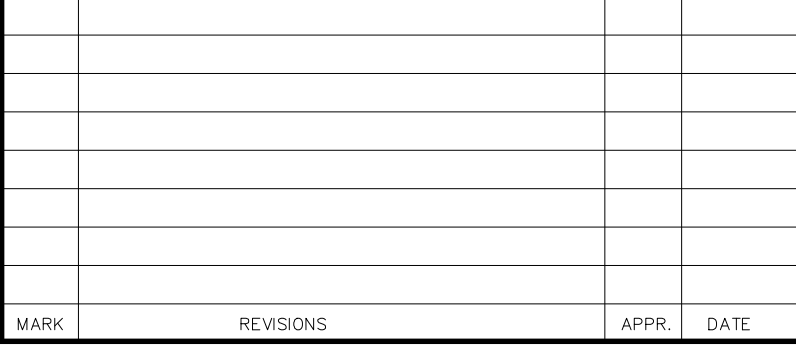


PHASE 5
DURATION: 15 WORKING DAYS



DESIGN BY: LONG TRAN
 REVIEW BY: LONG TRAN
 APPROVED BY: HUMAYUN AZIZ, P.E.
 CIVIL
 STATE OF CALIFORNIA
 C75713
 Exp. 6-30-2024

MARK	REVISIONS	APPR.	DATE



CITY OF REDLANDS
 DEPARTMENT OF MUNICIPAL UTILITIES AND ENGINEERING
 35 CAJON ST., SUITE 20
 REDLANDS, CA 92373
 TEL: 909-798-7698 www.cityofredlands.org
 APPROVED BY: _____ ENGINEER
 DATE: _____

TRAFFIC CONTROL PLAN
TRAFFIC SIGNAL INSTALLATION
LUGONIA AVENUE AND NEVADA STREET
 EDISON CONDUIT
 HORIZ. SCALE: 1" = 40' VERT. SCALE: N/A

TC-6
 SHEET 6 OF 6