

SPEED LIMIT	DIMENTION "A" ADVANCE WARNING SIGN SPACING	DIMENSION "L" MERGING TAPER LENGTH	DIMENSION "E" BUFFER SPACE (0% SLOPE)	MAXIMUM CHANNELIZER TAPER SPACING	MAXIMUM CHANNELIZER TANGENT SPACING
25 MPH	100 FT	125 FT	155 FT	25 FT	50 FT
30 MPH	250 FT	180 FT	200 FT	30 FT	60 FT
35 MPH	250 FT	245 FT	250 FT	35 FT	70 FT
40 MPH	250 FT	320 FT	305 FT	40 FT	80 FT
45 MPH	350 FT	540 FT	360 FT	45 FT	90 FT
50 MPH	350 FT	600 FT	425 FT	50 FT	100 FT
55 MPH	500 FT	600 FT	495 FT	50 FT	100 FT
60 MPH	500 FT	720 FT	570 FT	50 FT	100 FT

WORK HOURS:
7:00AM TO 4:00PM

NOTES:
 1. ACCESS TO DRIVEWAYS AND SIDE STREETS MUST BE MAINTAINED AT ALL TIMES.
 2. CONTACT PROPERTY OWNER(S) 72 HOURS PRIOR TO START OF WORK.
 3. FLAGGER TO ASSIST PEDESTRIAN CROSSING AS REQUIRED.

SCALE 1" = 40'

Under Ground Service Alert of Southern California
 Call: TOLL FREE 1-800 227-2600
 TWO WORKING DAYS BEFORE YOU DIG

Traffic Control Plans Prepared By:

 WWW.MZBINC.COM
 CELL: 949-254-4792

DESIGN BY: MUHAMMAD ILHAM
 REVIEW BY: HUMAYUN AZIZ
 APPROVED BY: HUMAYUN AZIZ, P.E.

CITY OF CHINO
 ENGINEERING DEPARTMENT
 13220 CENTRAL AVENUE CHINO, CA 91710
 WWW.CITYOFCHINO.ORG

TRAFFIC CONTROL PLAN
 PUBLIC STREET IMPROVEMENT
 KIMBALL AVENUE

TC - 01
 SHEET 02 OF 03

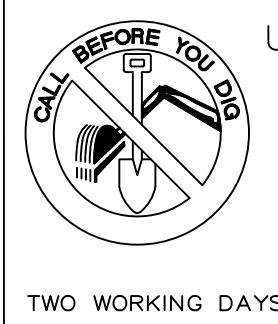
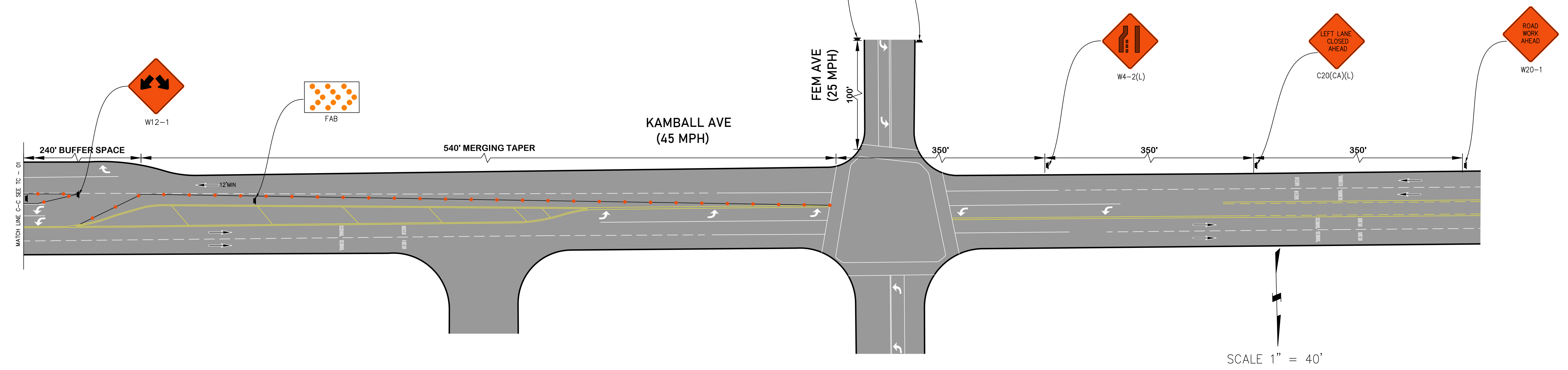
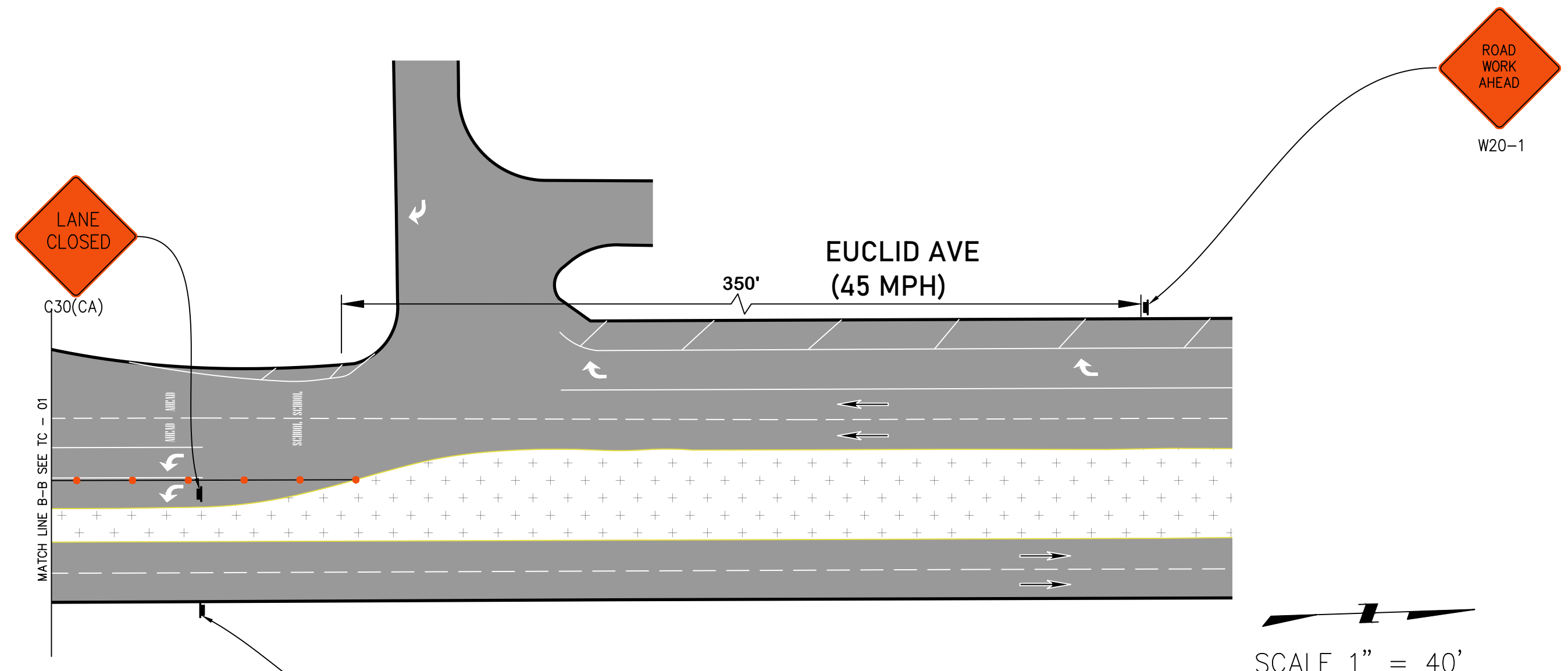
SPEED LIMIT	DIMENSION "A" ADVANCE WARNING SIGN SPACING	DIMENSION "L" MERGING TAPER LENGTH	DIMENSION "E" BUFFER SPACE (0% SLOPE)	MAXIMUM CHANNELIZER TAPER SPACING	MAXIMUM CHANNELIZER TANGENT SPACING
25 MPH	100 FT	125 FT	155 FT	25 FT	50 FT
30 MPH	250 FT	180 FT	200 FT	30 FT	60 FT
35 MPH	250 FT	245 FT	250 FT	35 FT	70 FT
40 MPH	250 FT	320 FT	305 FT	40 FT	80 FT
45 MPH	350 FT	540 FT	360 FT	45 FT	90 FT
50 MPH	350 FT	600 FT	425 FT	50 FT	100 FT
55 MPH	500 FT	600 FT	495 FT	50 FT	100 FT
60 MPH	500 FT	720 FT	570 FT	50 FT	100 FT

WORK HOURS:

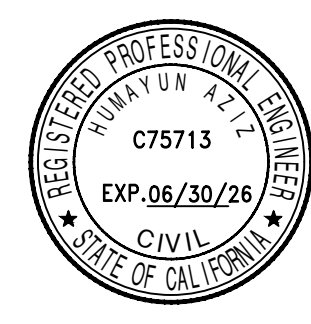
7:00AM TO 4:00PM

NOTES:

1. ACCESS TO DRIVEWAYS AND SIDE STREETS MUST BE MAINTAINED AT ALL TIMES.
2. CONTACT PROPERTY OWNER(S) 72 HOURS PRIOR TO START OF WORK.
3. FLAGGER TO ASSIST PEDESTRIAN CROSSING AS REQUIRED.



Under Ground Service Alert of Southern California
Call: TOLL FREE 1-800-227-2600



DESIGN BY: MUHAMMAD ILHAM
REVIEW BY: HUMAYUN AZIZ
APPROVED BY: HUMAYUN AZIZ, P.E.

MARK	REVISIONS	APPR.	DATE

CITY OF CHINO
ENGINEERING DEPARTMENT
13220 CENTRAL AVENUE CHINO, CA 91710
WWW.CITYOFCHINO.ORG

APPROVED BY: V. BRETT MORGAN
DATE: _____

TRAFFIC CONTROL PLAN
PUBLIC STREET IMPROVEMENT
KIMBALL AVENUE
HORIZ. SCALE: 1" = 40' VERT. SCALE: _____

TC - 02
SHEET 03 OF 03